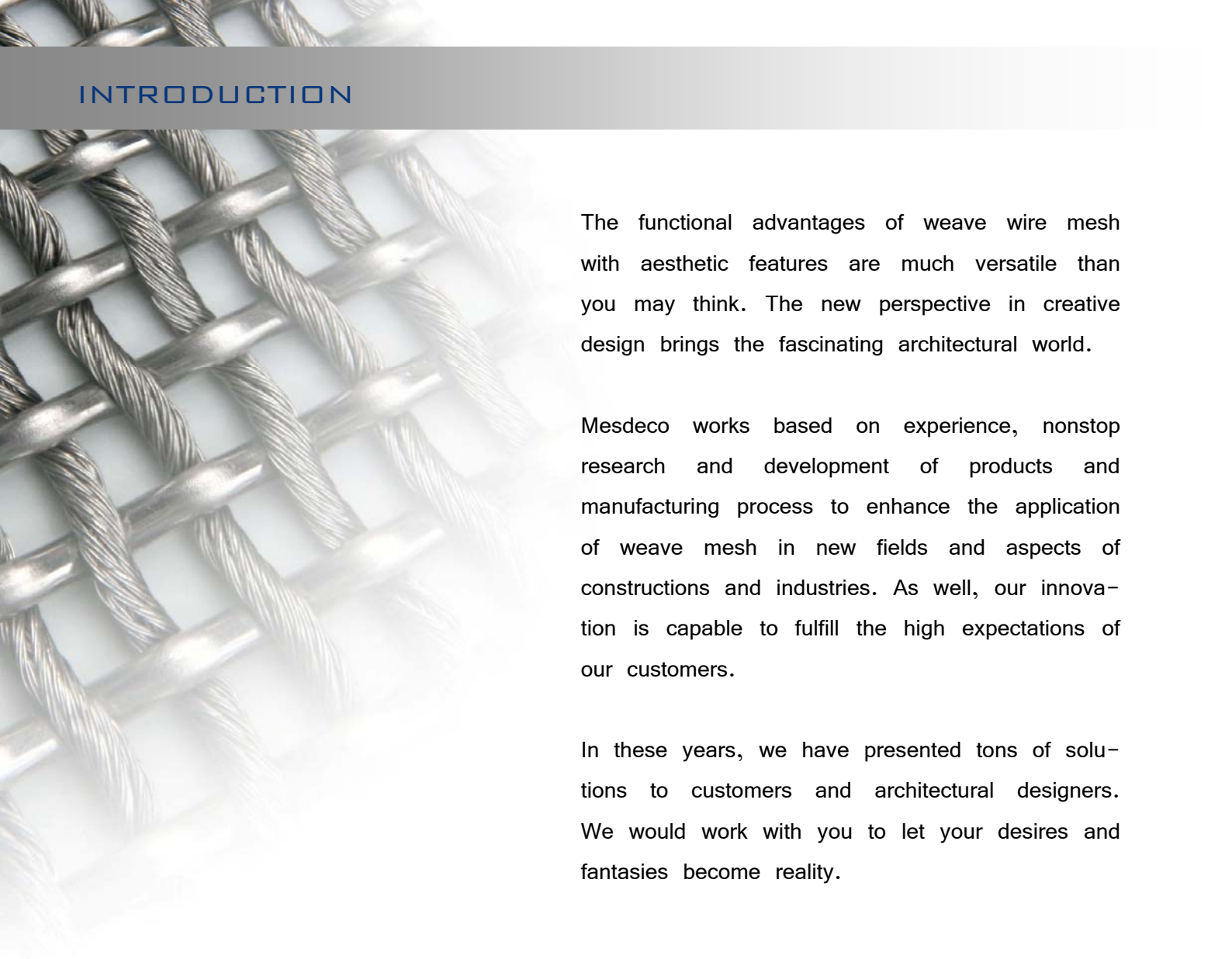


ARCHITECTURAL WEAVE MESH

Mesdeco





INTRODUCTION

The functional advantages of weave wire mesh with aesthetic features are much versatile than you may think. The new perspective in creative design brings the fascinating architectural world.

Mesdeco works based on experience, nonstop research and development of products and manufacturing process to enhance the application of weave mesh in new fields and aspects of constructions and industries. As well, our innovation is capable to fulfill the high expectations of our customers.

In these years, we have presented tons of solutions to customers and architectural designers. We would work with you to let your desires and fantasies become reality.

CONTENT

1Introduction
2materials and finishes
3Features
4application-facade
6application-ceiling
8application-partition walls
10application-barrier
11Installation
13products list and specifications

MATERIALS

Weave mesh is made of wire of

- stainless steel 304
- stainless steel 316
- pre-galvanized mild steel
- aluminum

FINISHES

There are various finishes applicable for different materials to meet the design and applications.

Stainless steel

- Mill
- Pickled
- Chemicolor
- Electro-Polished

Pre-Galvanized Steel

- Mill
- Powder Coating
- PVF2

Aluminum

- Mill
- Anodized
- Powder Coating
- PVF2

SOLIDITY AND DURABILITY

Weave mesh in various finishes is widely used in architectural projects to furnish the rigidity and durability as the original properties of the materials.

SAFETY AND PROTECTIVE

The smooth surfaces of weave mesh deliver safety and protection for all applications, such as decoration screen, ceiling, barrier, fencing, cladding, sunshield, etc.



PATTERNS AND DESIGN

Variety of patterns and designs with creative concept, Weave mesh functions the majority in decoration and its stability and solidity feature, which are versatily used for architectural projects.

SEMITRANSSPARENT AND SUN SCREENING

The characteristic of open mesh, weave mesh can provide different rate of open area for ventilation and intensity for lighting. Among the patterns, there should be a suitable one which can meet your design for partitions.

STRUCTURAL ACOUSTIC FUNCTION

With decoration feature, weave mesh is able to equip hidden sound absorbing materials behind to provide solution for acoustic function

HANDY FOR INSTALLATION AND REMOVAL

Weave mesh are supplied in different dimensions per the design to fit the installation structure, as well, in term of being easy for removal.

TRENDY OUTLOOK

Architectural styles are in tendency of heavy steel structural look in the sense of solidity and stability. Weave mesh can feature such distinctions to match the majority of the design.





Facade is recommended to use stainless steel 316 weave mesh for longer duration against corrosive environment. It can act as a protective cladding for buildings from being damaged by general doodle, beating or strike.

Weave mesh also functions sunshield with decoration features. There are various patterns of weave meshes for selection to enhance buildings' visual effect. At daytime, it reflects the light as a glistening surface. At night, it turns exquisite while reflecting the faint lamplight.

Weave mesh is widely used on multiplex buildings, such as office building, school, exhibition, museum, stadium, etc.

Obviously, the building with weave mesh facade, the outlook is shielded, however, the landscape outside is completely visible from the inside of the building.

applicable product

Harriol series

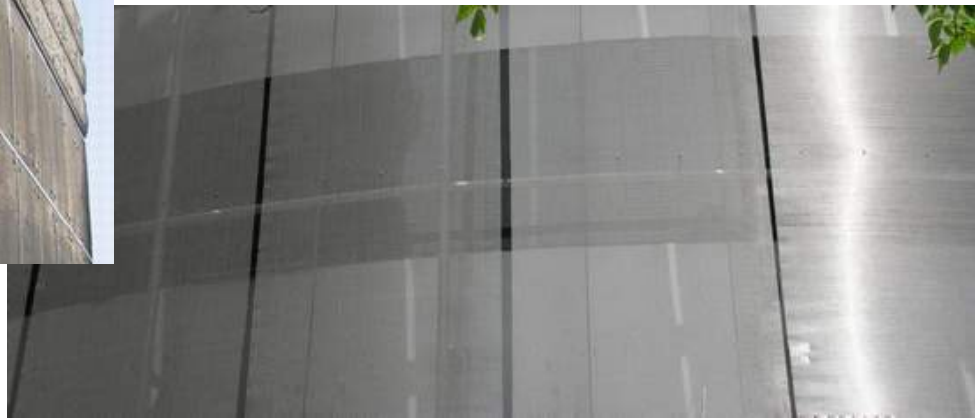
Mulle series





It seems a dynamic artwork. Viewing from different angles, stainless steel weave mesh reflects diverse effects as well as to demonstrate the prevailing design.

With weave mesh as the facade, all exterior equipment and devices, like stairs, pipes, exhaust fans, etc. are hidden behind the weave mesh in order to make the buildings' outlook neat.



It is efficient and economy for installation. Usually, the dimensions of weave mesh are tailor-made and cut-to-size to fit the design and the installation structure. Also, it may come with fixing accessories per your design to withstand the required loads.

5



The see-through and the ventilating feature of weave mesh is one of the suitable products for suspended ceiling. The apertures allow penetration of lights, ventilation of air and no cutout for installation of sprinklers. Other devices can be hidden on the ceiling with air intake. The weave mesh can reflect the light of the surroundings to bring a wonderful effect to the ceiling.



Weave mesh as false ceiling is applicable for office, hall, theatre, school, convention centre, station, etc. Beside cladding for the roof and device, it features decoration as well.

In theatre, it is used to make the ambience elegant along with soundproof by the structural system.

In an exhibition, it is used as the ceiling for exhibition stands.....

applicable product
Harriol series
Mulle series



Weave mesh is remarkable to deliver a range of effects in flat, domed, single individual ceiling style, etc.. It is handy to fix and remove with simple tools.

In this picture, the restaurant is furnished with weave mesh as flat ceiling for the amenity of the surrounding.

The different opening rates of the mesh will produce the different effects of feeling and atmosphere.

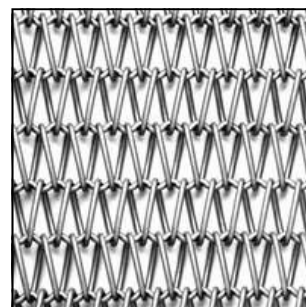
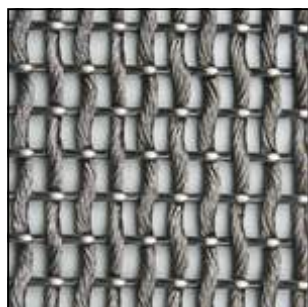


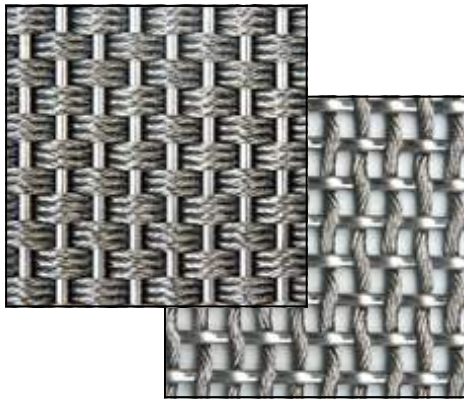


The application of weave mesh is versatile even for decorative partitions, which is widely used in hotel, restaurant, hall, lobby, etc., to provide individual area for a single party but the visual space and ventilation remain the same as the non-partitioned. It also is prevailing for the ambiance of cyber look, or creative for the desire atmospheres and amenities with lighting effects



applicable product
Harriol series
Dubuix series





Partition the business lobby into two sections with stainless steel weave mesh. The semitransparent feature makes the lobby spacious. Besides function as a divider, it also decorate the space with artistic background. Under the lighting , the weave mesh reflects the clinquant appearance and makes the surrounding gorgeous.

It is spectacle to column finished with weave mesh other than the traditional material - Marble, Granite, Claddings.



Stainless steel weave mesh is ideal material for traffic facility, it can be used as rails for the footpath and over-bridge. Furthermore, with the structural sound absorption, weave mesh is utilized as soundproof barrier on the highways.



Definitely, stainless steel weave mesh is a supreme and durable materials for ornament well per the city planning. Most likely, stainless steel weave mesh is use for handrails , security barriers, etc.



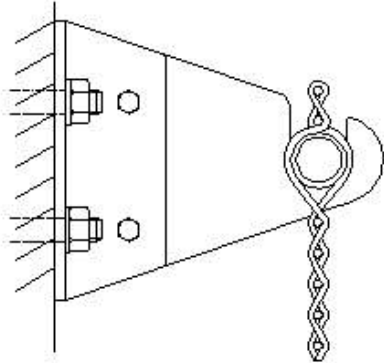
applicable product
Mulle series
Harriol series



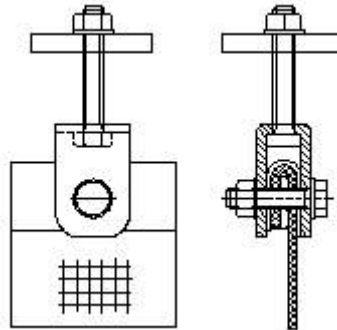
VERTICAL MOUNTINGS

Top mountings

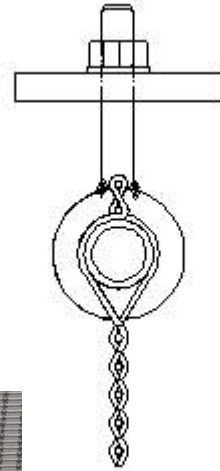
triangular fastening brackets



clevis screw

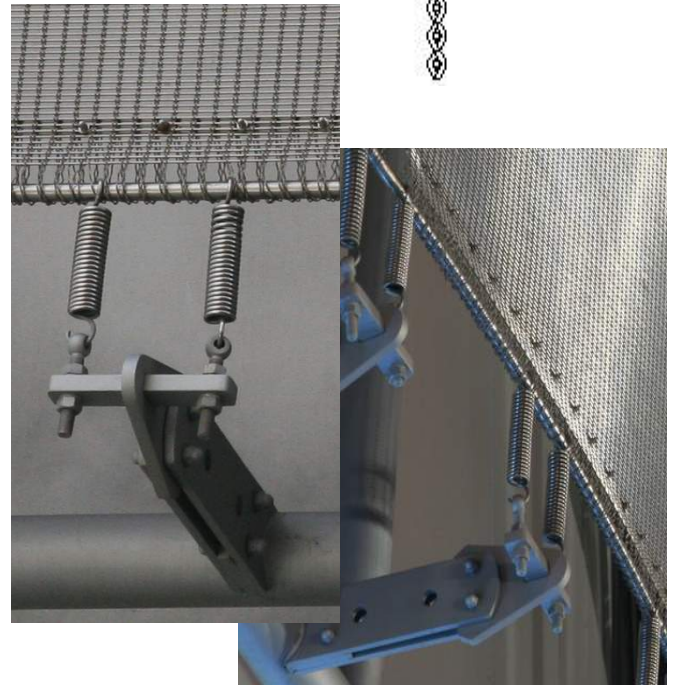
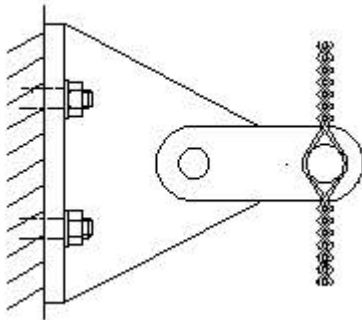


using eyebolts



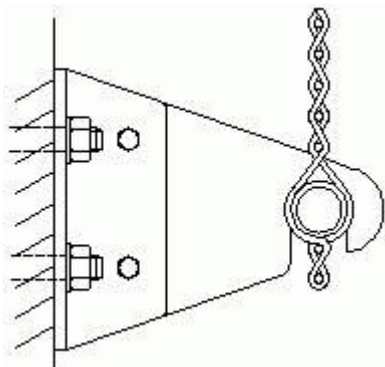
Intermediate mountings

using a rotational clips

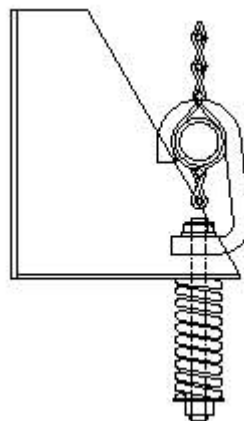


Bottom mountings

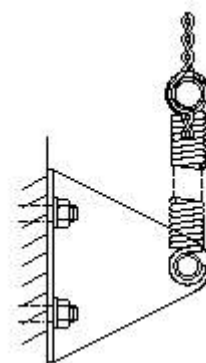
triangular fastening brackets



with springs to fasten



with springs to fasten



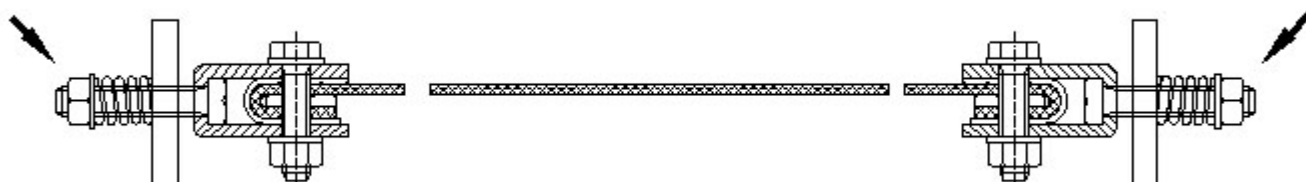


HORIZONTAL MOUNTINGS

the middle of the mesh is slack



using the turnscrew to make the mesh tight



SCBL-2520-6081



open area:	43%
warp:	2.5mm
weft:	2mm
warp cable pitch:	6mm
weft wire pitch:	8mm
thickness:	7mm
materials:	stainless steel
application:	partition walls

SCBL-2520-6082



open area:	43%
warp:	2.5mm
weft:	2mm
warp cable pitch:	6mm
weft wire pitch:	8mm
thickness:	7mm
materials:	stainless steel
application:	partition walls

SCBL-3030-50100



open area:	21%
warp:	3mm
weft:	3mm
warp cable pitch:	5mm
weft wire pitch:	10mm
thickness:	9mm
materials:	stainless steel
application:	partition walls

SCBL-1012-3060



open area:	50%
warp:	1.0mm
weft:	1.2mm
warp cable pitch:	3mm
weft wire pitch:	6mm
thickness:	3.5mm
materials:	stainless steel
application:	partition walls

SCBL-2520-21080



open area:	65%
warp:	2.5mm
weft:	2mm
warp cable pitch:	21mm
weft wire pitch:	8mm
thickness:	5mm
materials:	stainless steel
application:	partition walls

TCBL-3040-1100145



open area:	65%
warp:	3x3.0mm
weft:	4.0mm
warp cable pitch:	110mm
weft wire pitch:	14.5mm
thickness:	10mm
materials:	stainless steel
application:	facade

TCBL-2025-800100



open area:	65%
warp:	3x2.0mm
weft:	2.5mm
warp cable pitch:	80mm
weft wire pitch:	10mm
thickness:	6.5mm
materials:	stainless steel
application:	facade, ceiling, partition walls

TCBL-2530-800100



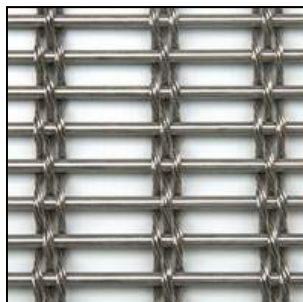
open area:	62%
warp:	3x2.5mm
weft:	3.0mm
warp cable pitch:	80mm
weft wire pitch:	10mm
thickness:	8mm
materials:	stainless steel
application:	facade, ceiling, partition walls

TCBL-1420-30080



open area:	55%
warp:	3x1.4mm
weft:	2mm
warp cable pitch:	30mm
weft wire pitch:	8mm
thickness:	5mm
materials:	stainless steel
application:	facade, ceiling

TCBL-1425-25080



open area:	43%
warp:	3x1.4mm
weft:	2.5mm
warp cable pitch:	25mm
weft wire pitch:	8mm
thickness:	8mm
materials:	stainless steel
application:	facade, ceiling

QCBL-2030-500651



open area:	40%
warp:	4x2.0mm
weft:	3mm
warp cable pitch:	50mm
weft wire pitch:	6.5mm
thickness:	7mm
materials:	stainless steel
application:	façade partition walls

QCBL-1020-36050



open area:	53%
warp:	4x1mm
weft:	2mm
warp cable pitch:	36mm
weft wire pitch:	5mm
thickness:	4mm
materials:	stainless steel
application:	facade, partition walls

QCBL-2030-75065



open area:	62%
warp:	4x2mm
weft:	3mm
warp cable pitch:	75mm
weft wire pitch:	6.5mm
thickness:	7mm
materials:	stainless steel
application:	facade, partition walls

QCBL-2030-500652



open area:	40%
warp:	4x2mm
weft:	3mm
warp cable pitch:	50mm
weft wire pitch:	6.5mm
thickness:	7mm
materials:	stainless steel
application:	facade, partition walls

TGTC-2520-2580



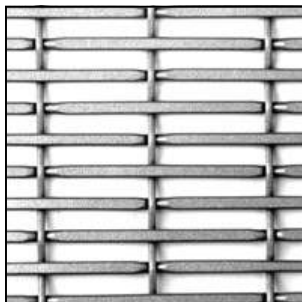
open area:	5%
warp:	2.5mm
weft:	2mm
warp cable pitch:	2.5mm
weft wire pitch:	8mm
thickness:	7mm
materials:	stainless steel
application:	partition walls

TGTC-1425-1480



open area:	5%
warp:	1.4mm
weft:	2.5mm
warp cable pitch:	1.4mm
weft wire pitch:	8mm
thickness:	5.5mm
materials:	stainless steel
application:	partition walls

SROD-1520-21060



open area: 55%
 warp: 1.5mm
 weft: 2mm
 warp wire pitch: 21mm
 weft wire pitch: 6mm
 thickness: 3.5mm
 materials: stainless steel, other metal
 application: facade, ceiling, partition walls

SROD-2015-21040



open area: 40%
 warp: 2mm
 weft: 1.5mm
 warp wire pitch: 21mm
 weft wire pitch: 4mm
 thickness: 4mm
 materials: stainless steel, other metal
 application: facade, ceiling, partition walls

SROD-1525-21060



open area: 53%
 warp: 1.5mm
 weft: 2.5mm
 warp wire pitch: 21mm
 weft wire pitch: 6mm
 thickness: 4mm
 materials: stainless steel, other metal
 application: facade, ceiling, partition walls

SROD-2525-22060



open area: 38%
 warp: 2.5mm
 weft: 2.5mm
 warp wire pitch: 22mm
 weft wire pitch: 6mm
 thickness: 6mm
 materials: stainless steel, other metal
 application: facade, ceiling

SROD-5050-550140



open area:	%
warp:	5mm
weft:	5mm
warp wire pitch:	55mm
weft wire pitch:	14mm
thickness:	12mm
materials:	aluminum, stainless steel
application:	facade, ceiling, traffic

SROD-4040-200140



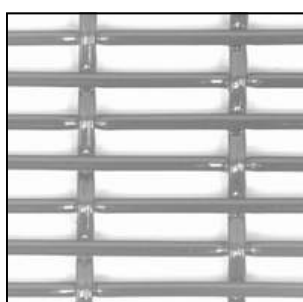
open area:	%
warp:	4mm
weft:	4mm
warp wire pitch:	20mm
weft wire pitch:	14mm
thickness:	8mm
materials:	aluminum, stainless steel
application:	facade, traffic

DROD-1220-21060



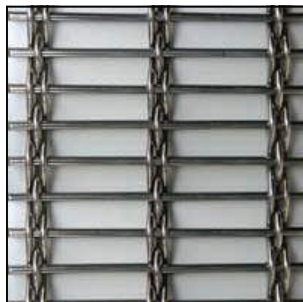
open area:	40%
warp:	2x1.2mm
weft:	2mm
warp wire pitch:	21mm
weft wire pitch:	6mm
thickness:	4mm
materials:	stainless steel, other metal
application:	facade, ceiling, partition walls

DROD-1520-21040



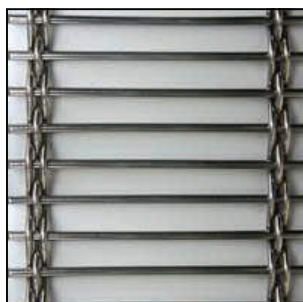
open area:	38%
warp:	2x1.5mm
weft:	2mm
warp wire pitch:	21mm
weft wire pitch:	4mm
thickness:	4mm
materials:	stainless steel, other metal
application:	facade, ceiling, partition walls

TROD-2040-350145



open area:	60%
warp:	3x2.0mm
weft:	4mm
warp wire pitch:	35mm
weft wire pitch:	14.5mm
thickness:	8mm
materials:	stainless steel, other metal
application:	facade

TROD-3040-1000145



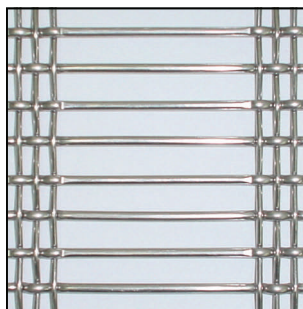
open area:	65%
warp:	3x3.0mm
weft:	4.0mm
warp wire pitch:	100mm
weft wire pitch:	14.5mm
thickness:	10mm
materials:	stainless steel
application:	facade

TROD-2030-900100



open area:	65%
warp:	3x2.0mm
weft:	3.0mm
warp wire pitch:	90mm
weft wire pitch:	10mm
thickness:	7mm
materials:	stainless steel, other metal
application:	facade

TROD-2540-900145



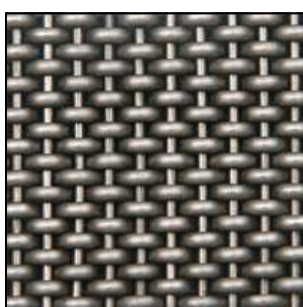
open area:	67%
warp:	3x2.5mm
weft:	4.0mm
warp wire pitch:	90 (clear 5) mm
weft wire pitch:	14.5mm
thickness:	6.5mm
materials:	stainless steel
application:	facade

TGTR-1014-21014



open area:	5%
warp:	1.0mm
weft:	1.4mm
warp wire pitch:	21mm
weft wire pitch:	1.4mm
thickness:	3.5mm
materials:	cuprum, stainless steel
application:	partition walls

TGTR-1420-5020



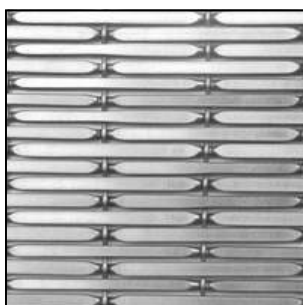
open area:	5%
warp:	1.4mm
weft:	2mm
warp wire pitch:	5mm
weft wire pitch:	2mm
thickness:	5.5mm
materials:	cuprum, stainless steel
application:	partition walls

TGTR-1410-6010



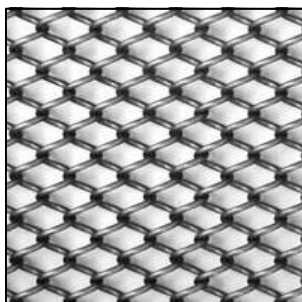
open area:	5%
warp:	1.4mm
weft:	1.0mm
warp wire pitch:	6mm
weft wire pitch:	1mm
thickness:	3.5 mm
materials:	cuprum, stainless steel
application:	partition walls

TGTR-1020-21030



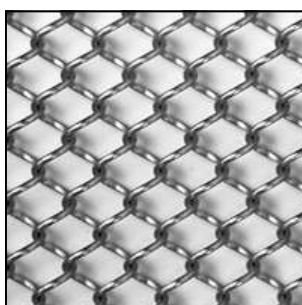
open area:	5%
warp:	1.0mm
weft:	2.0mm
warp wire pitch:	21mm
weft wire pitch:	3mm
thickness:	3.5mm
materials:	cuprum, aluminum
application:	partition walls

DU-1250



open area:	%
warp:	1.2mm
weft:	1.2mm
pitch:	5mm
thickness:	9mm
materials:	aluminum, stainless steel
application:	partition walls

DU-1480



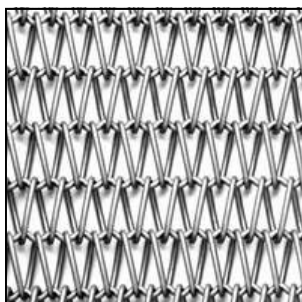
open area:	%
warp:	1.4mm
weft:	1.4mm
pitch:	8mm
thickness:	9mm
materials:	aluminum, stainless steel
application:	partition walls

DU-1012-501



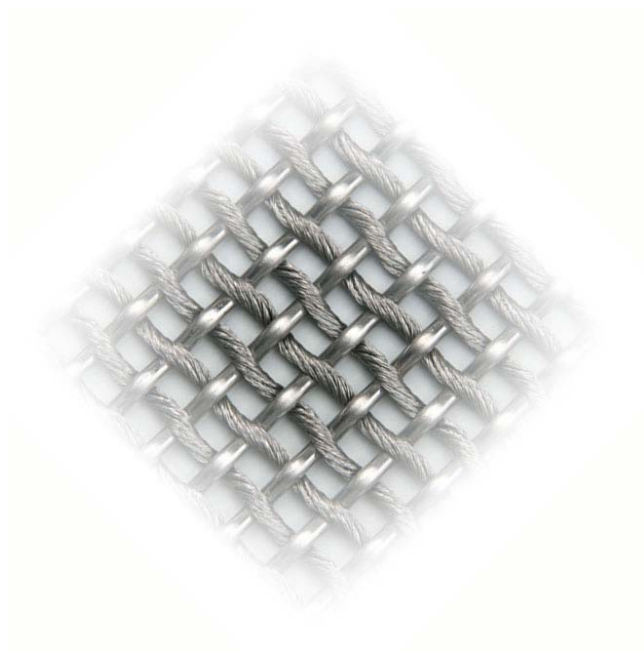
open area:	%
warp:	4x1.0mm
weft:	1.2mm
spiral pitch:	5mm
thickness:	6mm
materials:	stainless steel, other metal
application:	partition walls

DU-1012-502



open area:	%
warp:	1.0mm
weft:	1.2mm
spiral pitch:	5mm
thickness:	6mm
materials:	stainless steel, other metal
application:	partition walls





Mesdeco



Gentle Glory International Enterprise Ltd

Rm 6B, Kingpower Commercial Building

409-413 Jaffe Road, Causeway Bay, Hong Kong

Tel: 852-25635129 Fax: 852-25484098

E-mail: info@gentleglory.com